

Lenovo® recommends Windows 8.

**lenovo** FOR  
THOSE™  
WHO DO.

THINKSTATION® P300 WORKSTATION

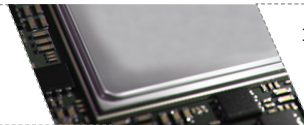
**POWER OF A WORKSTATION.  
PRICE OF A DESKTOP.**



Mission-critical tasks require superior reliability and powerful performance. ThinkStation® P300 leads on both counts and does it with exceptional all-around value. Consider the latest high-performance Intel® Xeon® processors; NVIDIA® Quadro® professional graphics; and innovative Flex module support for easy customization, all surprisingly affordable.

WHY BUY  
THE P300  
WORKSTATION?

**1** RELIABLE  
PERFORMER



Intel® Xeon® processors and NVIDIA® Quadro® graphics deliver powerful performance. ISV certifications and error checking and correcting memory ensure exceptional reliability.

**2** INNOVATIVE  
FEATURES



The FLEX module allows for unprecedented flexibility in customizing I/O ports.

**3** EXCEPTIONAL  
VALUE



Truly affordable for any organization requiring a comfortable combination of performance and value.

WHO NEEDS  
THE P300  
WORKSTATION?

**1** Companies ready to upgrade from PCs to more powerful workstations without breaking the budget.

**2** Any organization requiring reliable performance – manufacturing, design, architecture, finance, medical imaging, software development etc.

**3** Users in mission-critical environments seeking high-performance yet affordable workstations.



Lenovo® recommends Windows 8.



## SPECIFICATIONS

### PERFORMANCE

**Processor**

Tower / SFF  
 Intel® Core™ i7 processor  
 Intel® Core™ i5 processor  
 Intel® Core™ i3 processor  
 Intel® Xeon® E3-1200 processor

**Power supply**

280W 85%  
 450W 92%

**Operating System**

Windows 8.1 64 bit  
 Windows 8.1 Professional 64 bit  
 Windows 7 Professional 64 bit  
 Windows 7 Professional 32 bit

**Graphics**

SFF : NVIDIA® NVS / Quadro® up to K600  
 Tower: NVIDIA® NVS / Quadro® up to K4000

**Memory**

4 Slots, 32GB

**Max HDD**

SFF : 3 HDD  
 2 x 3.5"  
 1 x 2.5"

Tower: 4 HDD  
 4 x 3.5" or  
 4 x 2.5"

**mSATA**

24GB, 128GB, 256GB

**RAID**

0, 1, 5, 10<sup>1</sup>

**Media Card Reader**

SD Card Reader Standard  
 Optional 29:1

**Flex Module**

YES – up to 4 devices  
 (1) 9.5 mm Slim ODD  
 (1) MCR  
 1394 IEEE Firewire  
 eSATA

### DESIGN

**Chip set**

C226

**Storage**

3.5" SATA 7200 RPM up to 4TB  
 3.5" SATA 7200 RPM Hybrid up to 2TB  
 2.5" SATA 10K RPM up to 1TB  
 2.5" SATA SSD up to 512GB  
 mSATA 24GB

**Ports**

**Front**  
 (2) USB 3.0  
 (1) Microphone  
 (1) Headphone  
 (1) SD Card Reader  
 (1) 29:1 MCR (Optional)  
 (1) 1394 IEEE Firewire (Optional)  
 (1) eSATA (Optional)

**Rear**

(4) USB 3.0  
 (2) USB 2.0  
 (1) Serial (+1 Optional)  
 (1) VGA  
 (2) Display Port  
 (1) Ethernet  
 (1) Audio Line In  
 (1) Audio Line Out  
 (1) Microphone In

**Physical Security**

Cable Lock

**Wi-Fi**

Optional Intel® Wireless – N 7260  
 802.11 b/g/n, 2 x 2, 2.4 GHz WiFi + Bluetooth® 4.0

**PCI / PCIe Slots**

1 x PCIe x16  
 1 x PCI x4 (x16 Mechanical)  
 1 x PCIe x1  
 1 x PCI

**Dimensions (W x D x H)**

SFF : 4.0" x 14.8" x 13.3"  
 (101.6 mm x 375.92 mm x 337.82 mm)  
 Tower: 6.9" x 16.97" x 16.7"  
 (175.26 mm x 429.26 mm x 424.18 mm)

### SOFTWARE

**WINDOWS 7 PRELOADS**

Adobe® Acrobat Reader  
 CyberLink Power DVD (on systems with Optical drives)  
 CyberLink Create (on systems with Optical drives)  
 Microsoft® Office 2013 Trial  
 Norton® Internet Security 2014 (30-day trial)  
 Skype™  
 ThinkVantage® System Update  
 Rescue and Recovery™ (Ready-to-Install)  
 Lenovo® Reach (only in US and Canada)  
 Lenovo® Solution Center  
 PC Device Experience

**WINDOWS 8.1 PRELOADS**

CyberLink Power DVD (on systems with Optical drives)  
 CyberLink Create (on systems with Optical drives)  
 Evernote®  
 Lenovo® Companion  
 Lenovo® Support  
 Lenovo® Solution Center  
 Norton® Internet Security 2014 (30-day trial)  
 Password Manager (Web install)  
 PC Device Experience  
 Hightail  
 Lenovo® Reach (only in US and Canada)  
 Norton® Studio



**Lionfield**  
 Technology Solutions, Ltd.

**Stress-Free IT. Guaranteed.**

610.903.1000 | www.lionfield.com

## ACCESSORIES



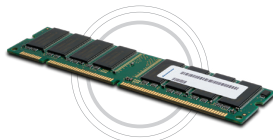
Monitor

Lenovo® ThinkVision® LT3053p 30" LED Monitor (60A4-RAR1)  
 Lenovo® ThinkVision® LT2452p 24" LED Monitor (4420MB2)  
 Lenovo® ThinkVision® LT2252p 22" LED Monitor (2572MB6)



Storage

500GB SATA HDD – 43R1990  
 1TB SATA HDD – 45J7918  
 2TB SATA HDD – 4XB0F18667



Memory

2GB NON-ECC UDIMM – 0A65728  
 4GB NON-ECC UDIMM – 0A65729  
 8GB NON-ECC UDIMM – 0A65730

<sup>1</sup> Tower Only

## LENOVO SERVICES

Lenovo offers a comprehensive portfolio of services to support and protect your ThinkCentre investment. Focus on your customers and business, not your IT.

**PRIORITY TECHNICAL SUPPORT\***

Makes your priority, our priority. 24x7 priority call routing to advanced-level technicians, electronic incident tracking, and rapid response and resolution.

**WARRANTY UPGRADES - ONSITE AND NEXT BUSINESS DAY**

Maximizes PC uptime and productivity by providing convenient, fast repair service the next business day.

**WARRANTY EXTENSIONS (1 TO 4 YEARS TOTAL DURATION)**

This fixed-term, fixed-cost service helps accurately budget for PC expenses, protect your valuable investment and potentially lower the cost of ownership over time.

**PART NUMBER XXXXX**  
**PRICE: XXX**

\* Not available in all regions



**1 The most reliable workstation\*** – Engineered to channel maximum airflow over key components.

**2 Blazing speeds and scalability** – High-performance components and features to run workstation class applications.

**3 Serviceability** – ThinkStation® workstations are designed to make upgrades fast and easy.

**4 Wide range of ISV certifications** – Ensures compatibility with key workstation applications.

\* Legal footnote: A 2012 TBR Repair Rate Study found ThinkStation to be 24% more reliable than Dell and 16% more reliable than HP workstations

