

Lenovo® recommends Windows 8.

lenovo® FOR
THOSE™
WHO DO.

THE NEW BUSINESS 4x4

THE NEW THINKPAD® YOGA – 4 MODES FOR 4 TIMES THE PRODUCTIVITY



Different situations require different devices. Be it in a boardroom, a car, an office or a cafe, choose a mode and find your comfort zone. From laptop mode to stand mode and tent mode to tablet mode, the ThinkPad Yoga flips around 360°, this calls for a unique keyboard design. Lenovo's patented Lift and Lock system disables the keyboard in the tablet or stand mode, facilitating uninterrupted usage. With a pre-loaded Intel® SBA platform, it allows you to manage security better and ensure business continuity. All in all, it's a convertible Ultrabook™ primed for business.



LAPTOP MODE



STAND MODE



TENT MODE



TABLET MODE



Digitizer Pen is Optional

THINKPAD® YOGA

THINKPAD® YOGA



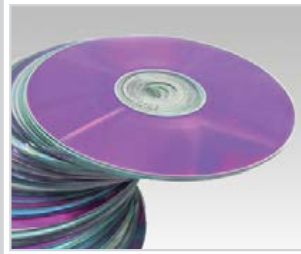
CONVERTIBLE ULTRABOOK™

A device that flips and folds to enable different usage modes with less than 19 mm thickness and weighing 1.57 kg (3.46 lbs)



LIFT 'N' LOCK KEYBOARD

Unique patented design protects the keys and gives better feel in tablet mode



UP TO 1TB OF STORAGE

Enough storage for 500 DVDs and near SSD speed with Lenovo® HDD performance booster



ONELINK EXPANDABILITY

Single cable docking provides VGA, RJ45, audio and extra USB ports

WORK INSTANTLY

- Offers an ultra-fast performance with its 4th generation Intel® Core™ i processor
- Optimized for Windows 8 with multiple input options – Multitouch screen, keyboard, 5-button clickpad and an optional digitizer pen
- Comes with an ultra-responsive 10 finger multitouch screen
- Connects rapidly to other devices using Near Field Communication (NFC) to let you share your documents, contacts and presentations, easily

WORK ALWAYS CONNECTED

- Links multiple devices to the system through a single port using the OneLink dock
- Gives up to 8 hours of battery life to enable longer unplugged usage

WORK MADE FLEXIBLE

- Built with a flexible form factor to give one device for both Tablet and Ultrabook™ users
- Just speak to your computer to get your commands executed with the Lenovo Voice Control feature
- Made extremely portable with its lightweight 1.57 kg (3.46 lbs) and super-slim design (19 mm / 0.74" thin)

SOFTWARE

PRELOADED OPERATING SYSTEM

- Windows 8
- Windows® 7 32 bit (available from Jan 2014)
- Windows® 7 64 bit (available from Jan 2014)

PRELOADED APPLICATIONS

Lenovo Developed Apps

- Lenovo® QuickControl - V 1.10
- Lenovo® Settings – Metro - for Windows 8.1
- Lenovo® Auto Scroll Package
- Lenovo® Base Utility Package
- ThinkPad® Monitor File
- Thinkvantage® Active Protection system
- Lenovo® Companion – Metro - V 1.2
- Lenovo® Experience Center – V 1.0
- Lenovo® Solution Center – V 2.1
- Lenovo® Support – Metro - V 1.2
- Device Stage – Lenovo Thinkvantage Tools - V 4.0
- Password Manager 4.2
- RapidBoot HDD Accelerator
- Thinkvantage System Update V5.02 (with 1st boot – Call to TVSU)
- StartPin Config (Thinkpad Edge S Touch Sharkbay)
- User Guide Viewer and Warranty Viewer

3rd party Applications – Only certain NLS preloads

- Amazon Kindle Metro – Not PRC – V 1.1
- Ebay – Metro – V 1.2
- Intel® AppUp Center – V 3.8
- Lenovo Cloud Storage by SugarSync – V 1.9 – Not PRC
- Lenovo Cloud Storage by SugarSync – Metro App – V 1.3
- Nitro Pro 8 for Windows 8.1 – V 8.5
- Rara – Metro – V 1.0
- Skype™ - Not in CS
- MS Office 2013 WW except JP
- Absolute for Ultrabook™ – V2.3
- AccuWeather – Metro – V 2.2
- Evernote® – Metro – V 1.1
- Evernote® Skitch – Metro – V 2.3
- Norton™ Internet Security 2014 – 30-day trial
- Norton™ Studio – Metro – V 1.2
- Dolby® Home Theater
- Zinio
- Validity FMA
- Express Cache
- Nuance Dragon Assistant - limited language support, not in PRC



SPECIFICATIONS

<p>PROCESSOR</p> <p>Intel® Core™ i7-4500U (Up to 3.00 GHz, 3MB L3, 1600 MHz FSB) Intel® Core™ i7-4600U (Up to 2.10 GHz, 3MB L3, 1600 MHz FSB)** Intel® Core™ i5-4200U processor (2.6 GHz, 3MB Cache, 1600 MHz) Intel® Core™ i5-4300U (Up to 1.90 GHz, 3MB L3, 1600 MHz FSB)** Intel® Core™ i3-4010U processor (1.7 GHz, 3MB Cache, 1600 MHz)</p>	<p>OPERATING SYSTEM</p> <p>Windows 8.1 Windows 8.1 Pro Windows® 7 (Windows® 7 available only from Jan 14 models)</p>	<p>DISPLAY</p> <p>12.5" HD IPS (1366 x 768) 300 nits 10-finger multitouch display 12.5" FHD IPS (1920 x 1080) 400 nits 10-finger multitouch display FHD available with option of combined Wacom digitizer pen and Anti-glare coating.</p>
<p>GRAPHICS</p> <p>Intel® HD Graphics 4400</p>	<p>MEMORY</p> <p>4GB PC3-12800 DDR3L SDRAM 1600 MHz Memory 8GB PC3-12800 DDR3L SDRAM 1600 MHz Memory</p>	<p>WEBCAM</p> <p>720p HD</p>
<p>STORAGE</p> <p>HDD 1TB/5400 rpm 500GB/5400 rpm 500GB/7200 rpm (Jan 2014) SSHD 500GB / 8GB (Jan 2014) SSD 128GB SSD SATA3 Intel® 180GB SSD SATA3 256GB SSD SATA3 mSATA 16G</p>	<p>DIMENSIONS (W x D x H)</p> <p>316.6 mm x 221 mm x 18.8 mm-19.4 mm (12.46" x 8.70" x 0.74"-0.76")</p>	<p>WEIGHT</p> <p>1.57 kg (3.46 lbs)</p>
<p>I/O (INPUT/OUTPUT) PORTS</p> <p>2 x USB 3.0 (one Powered) Audio/Mic Combo OneLink Dock Mini HDMI 4-in-1 card reader VGA and RJ45 vis OneLink Dock</p>	<p>AUDIO</p> <p>Dolby® Home Theater® v4 Enhanced audio for VOIP</p>	<p>WIMAX/WIFI</p> <p>Intel® Wireless-N 7260 2 x 2 11 BGN+BT Intel® Dual Band Wireless-11 AC 7260 2 x 2 +BT</p>
<p>KEYBOARD</p> <p>Patented Lift 'n' Lock backlit Keyboard</p>	<p>BATTERY</p> <p>Up to 8 hours – MM2012, dependant upon configuration</p>	<p>NFC</p> <p>Optional NFC dependent upon model</p>
<p>ETHERNET</p> <p>Enable RJ45 using dongle or OneLink Dock</p>	<p>NAVIGATION</p> <p>TrackPoint® and 5-button clickpad</p>	<p>BLUETOOTH®</p> <p>Yes</p>

* Non Vpro from Oct 2013
 ** Vpro added after Jan 2014



ACCESSORIES FOR THINKPAD® YOGA



ThinkPad® OneLink Dock



ThinkPad Wireless Precision Mouse



ThinkPad Noise-Cancelling Earbuds



Lenovo® 65W DC Travel Adapter

SERVICE OFFERINGS

Lenovo® offers a comprehensive portfolio of award-winning services to support and protect your ThinkPad® investment. Lenovo® Services lets you focus on your customers and business, not your IT.

Priority Technical Support

Makes your priority, our priority. 24x7 priority call routing to advanced-level technicians, electronic incident tracking, rapid response and resolution.

Warranty Upgrades – Onsite and Next Business Day

Maximizes PC uptime and productivity by providing convenient, fast repair services at your home or office.

Warranty Extensions (1-to-4 Years Total Duration)

This fixed-term, fixed-cost service helps accurately budget for PC expenses, protect your valuable investment and potentially lower the cost of ownership over time.

Accidental Damage Protection

Avoid the hassles of unexpected repair costs. Provides coverage for non-warranted damage incurred under normal operating conditions, such as minor spills, drops, or damage to the integrated screen.



610.903.1000 | www.lionfield.com

©2013 Lenovo. All rights reserved.

Availability: Offers, prices, specifications and availability may change without notice. Lenovo is not responsible for photographic or typographic errors. **Warranty:** For a copy of applicable warranties, write to: Warranty Information, 500 Park Offices Drive, RTP, NC, 27709, Attn: Dept. ZPYA/B600. Lenovo makes no representation or warranty regarding third-party products or services. **Trademarks:** Lenovo, the Lenovo logo, Rescue and Recovery, ThinkPad, ThinkCentre, ThinkStation, ThinkVantage and ThinkVision are trademarks or registered trademarks of Lenovo. Microsoft, Windows and Vista are registered trademarks of Microsoft Corporation. Intel, the Intel logo, Intel Core, Core Inside, Xeon and Xeon Inside are registered trademarks of Intel Corporation in the U.S. and other countries. Other company, product and service names may be trademarks or service marks of others. Visit Lenovo.com/safecomputing periodically for the latest information on safe and effective computing.

